



**WOLVOX®**  
ERP E-Business *just in time...*

**SUPERMARKET  
MANAGEMENT**



# SUPERMARKET MANAGEMENT



## Sales Screen

**WOLVOX®**  
ERP E-Business just in time...

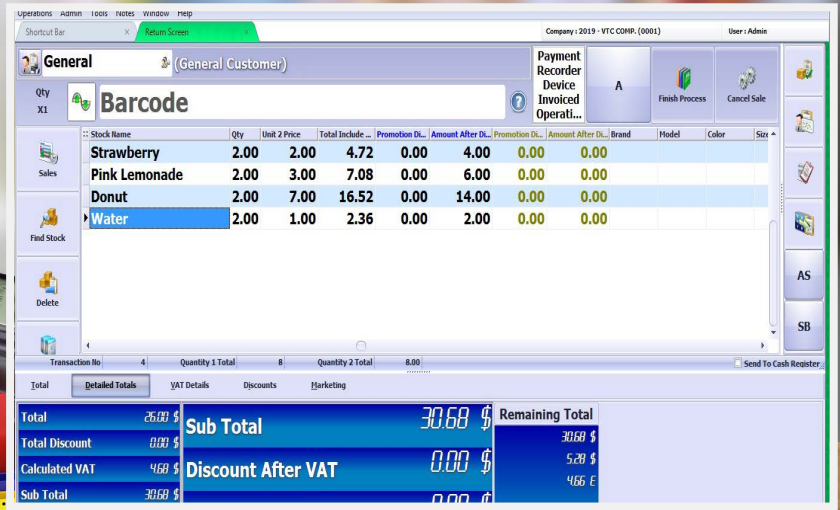
For convenience stores, supermarkets, grocery stores, gas stations, school canteens, or any business who wants to run its sales easily, the WOLVOX fast sales program allows you to save time by eliminating transaction clutter.

- Able to make operations rapidly by easy and understandable sale screen.
- By specializing the sale screen, when there is a need the programme can show the buttons, otherwise programme can remove unnecessary buttons.
- By using client screen, Wolvox can reflect sale screen to second monitor, when the barcode has been read, can show the total cost and purchased products on screen.
- Opportunity to make various announcements to your clients by scrolling text property.
- Able to use touchable monitor support for all fields in the programme.
- Able to sell for general clients.
- Able to sell from recorded clients and based on user privileges.
- Able to control of client balance and able to change rapidly

client informations with monitoring.

- During the sale process, able to warn the program user about blacklisted clients.
- By means of client limit controls, able to block over-limited sale.
- Able to sell to clients which are working with foreign currency.
- Able to make quick sale by reading of product barcodes.
- Able to sell by finding the product from lot number.
- Opportunity to make package sale.
- Able to transpose to sale screen by choosing non-barcode products from stock definitions.
- By means of stock limit controls, able to block to sale of unavailable products.
- The ability to create stock definitions from the sales screen for the products that you want to sell but are not included in your stocks.
- The ability to receive a warning for your stocks that does not have a barcode defined by having the barcode read from your computer's vault.

# SUPERMARKET MANAGEMENT



**WOLVOX®**  
ERP E-Business just in time...

- If there is no price entry for the products you add to the sales screen, you can make a controlled sale with taking warnings if it's necessary.
- Able to prevent damage momentarily by means of warning feature for products sold under purchase price.
- Able to make each branch sell from its own warehouse by selecting the warehouse to use. If the same stock is transferred to the sales screen for the second time, the program can automatically combine the stocks and increase the quantity value.
- Able to display stock pictures after product selection and to keep them on display for the period you specify,
- Able to provide automatic calculation of gramage and price of the program by reading barcode outputs from electronic scales.
- Able to show only prices of products by reading product barcodes before the sale.
- Able to take printout automatically after sales by advanced printing system.
- Ability to add products to the sales screen in a serial way by creating a product list for low-stock businesses
- Ability to cover the bill sum in terms of partial collection, different payment units or foreign currency by defining more than one payment
- Ability to view subtotals in detail or reduce subtotals panel,
- Besides stock sales, able to transfer of sale service to sale screen.



[www.akinsoft.com](http://www.akinsoft.com) - [www.wolvox.com](http://www.wolvox.com)

+90 444 40 80

 [akinsoftglobal](https://www.akinsoftglobal.com)

# SUPERMARKET MANAGEMENT

## SUPERMARKET MANAGEMENT



### Sale Hold

**WOLVOX®**  
ERP E-Business *just in time...*

Wouldn't it be nice to be able to continue the process without waiting for other customers and canceling the products you have read your barcode when your shopper from your business walks away from the checkout for the products that your customer forgot or wanted to change during payment? WOLVOX Barcode Sales program allows you to recall pending sales when you wish, while blocking long queues in front of the cash with the ability to put them on hold on the sales screen.

- Able to put on hold the sale by one click on the sale and return screen.
- Able to enter description about your product list.
- Ability to edit and retrieve products from the waiting list at any time
- Able to convert to sale of product list that taken back from waiting list.





# SUPERMARKET MANAGEMENT



**WOLVOX®**  
ERP E-Business just in time...

## Changing and Return Screen

Exchange or return of the products you sell; you can control the date of sale and change it or change the return screen, you can prevent both your business and your customer to be victim, by making restrictions on user privileges only authorized personnel can get refunds.

- From the receipt number of previous sales,
- Possibility to check and transfer to exchange or return screen by using customer name or other details,
- Possibility to exchange or return all sales or a single product on the voucher,
- All the features you use on the sales screen can also be used on the return screen.
- Able to make a choice for non-receipt products from product list.
- Able to print return and changing receipts.
- Ability to report return receipts at any time.



[www.akinsoft.com](http://www.akinsoft.com) - [www.wolvox.com](http://www.wolvox.com)

+90 444 40 80

    [akinsoftglobal](https://www.akinsoftglobal.com)

# SUPERMARKET MANAGEMENT



## Client Operations

**WOLVOX®**  
ERP E-Business *just in time...*

You can save the collections you have made from your registered clients and issue receipts to your clients. This prevents your personnel from accessing the pre-accounting program and provides access to your data within the framework of authorization. You can create client records for your new customers, then have them traded.

- Able to create new current definition within personnel privileges.
- Able to edit definitions by selecting from your client definitions.
- Able to collect of current balance of client by one button.
- Able to make collections according to the operation type.
- Able to print receipt of payment after the operation.
- By carrying forward, you can easily transfer money between your clients.





# SUPERMARKET MANAGEMENT

Shortcut Bar End of Day Report Company : 2019 - 001 - Twin Food Stores (002) User : Admin

11/11/2019 09:00 22/09/2020 23:59

Branch: 001 Staff: SYSDINA Currency: \$

☒ Include Cash Transfers  
☐ Show Cash Acc. Details  
☐ Include previous cash totals  
☒ Show Other Collection Details  
☒ Show Details of Money Order  
☒ Show Bank Cash Details  
☒ Show POS Details  
☒ Group POS Process Upon Bank  
☐ Show Invoice Details  
☒ Show Other Process Details  
☐ Do not show accounts without balance

Transac. No.	Date	Comment	Income	Expense
10		CASH COLLECTIONS	25,340.66	
20		CASH COLLECTIONS	23,721.65	
30		OTHER COLLECTIONS	166.55	
31		*Yemek Ceki	156.55	
31		*Yemek Ceki	10.00	
50		BANK ENTRIES	150.00	
51	29/07/2020	Use Credit	150.00	
60		INCOMING REMITTANCE	522.54	
61	05/04/2019	HSBC - Main Account - \$ - General_001 Customer_001	225.00	
61	24/05/2019	HSBC - Main Account - \$ - regroupstest - Lemonade,Sah	34.21	
62	27/06/2019	HSBC - Main Account - \$ - General_001 Customer_001	3.50	
61	27/06/2019	HSBC - Main Account - \$ - General_001 Customer_001	75.00	
61	27/06/2019	HSBC - Main Account - \$ - General_001 Customer_001	75.00	
61	15/02/2020	BANK - TL - \$ - Quick Stop - Horst Kloss - Water	11.80	
70		POS TRANSACTIONS	879.90	
71		X BANK - TL - \$	785.35	
71		A BANK - TL - \$	124.55	
90		PAYMENTS		4,317.70
100		Cash Payments		1,543.70
110		OTHER COLLECTIONS		2,629.00
111		*Yemek Ceki		2,629.00
130		BANK OUTPUTS		165.00
131	29/07/2020	Use Credit		150.00
131	29/07/2020	Use Credit - Credit Expense		15.00
170		GENERAL TOTAL	25,340.66	4,317.70
180		BALANCE	21,002.96	
190		BALANCE OF CASH ACCT(S) (Cash Collections - Cash Po	23,177.00	
191				
200		Domestic Sales Invoice - (E)	1,626.70	
201	15/02/2019	Alfreds Futterkiste - Mehmet YILDIRIM - Left Front Head	207.00	

Filter Clear

**WOLVOX®**  
ERP E-Business just in time...

## Other Operations

- Opportunity of following the cash that comes out of your case and entering your case by making expense and income entries.
- Opportunity to control the cash that comes out of your case by taking
- Opportunity of record the entrance or exit operations into your case from your bank by transferring between case-bank.
- By getting day-end report to view the details of the process done during the day on a single screen and the opportunity to perform day-end shutdown operations.
- By using the marketing system to provide that your marketing personnel receive a premium over their sales.



www.akinsoft.com - www.wolvox.com

+90 444 40 80

akinsoftglobal

# SUPERMARKET MANAGEMENT

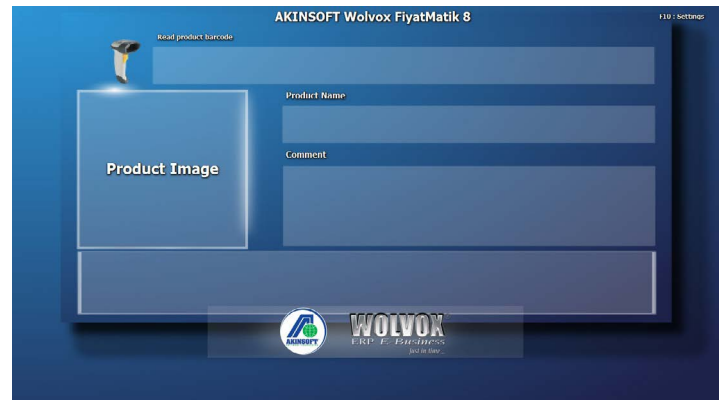


## Price View Screen

**WOLVOX®**  
ERP E-Business *just in time...*

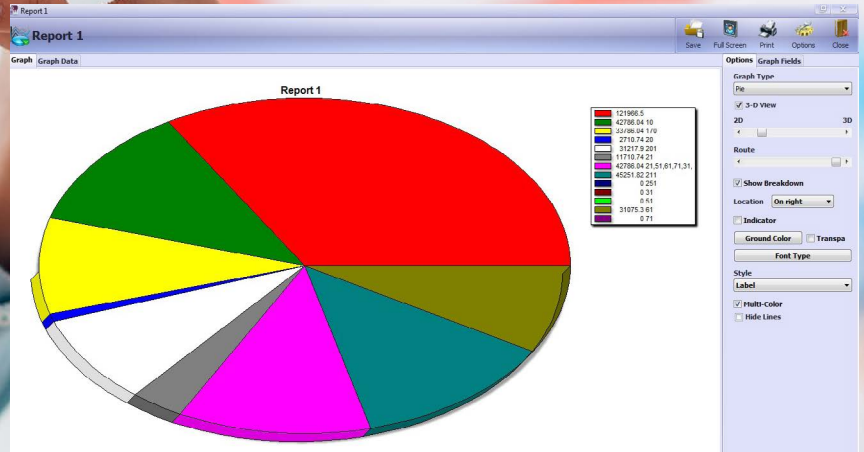
In addition to the products you sell, you can provide an additional monitor and barcode reader that you will put into your market through the WOLVOX Pricing Program to help your customers navigate the market by reading barcodes of products that are not priced.

- You can also install the WOLVOX Pricing Program on different devices with the Windows operating system.
- You can make your inventories appear in both \$ and foreign currency.
- You can adjust the duration of the stock to be displayed when the barcode is read,
- You can choose the colour of the ground at specified colours.
- You can provide to show discount products when your system is idle.





# SUPERMARKET MANAGEMENT



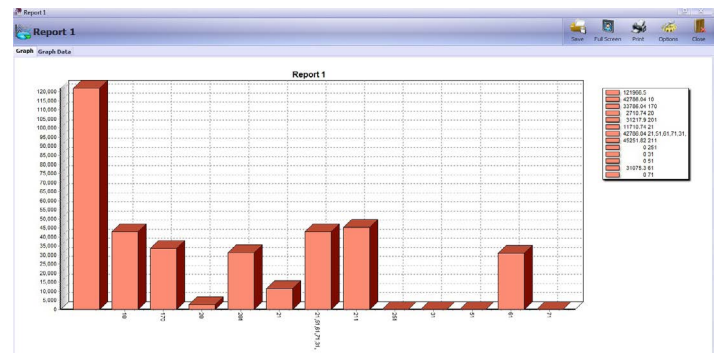
**WOLVOX®**  
ERP E-Business just in time...

**Raporlar**

No matter how proper your data entries are, there will be no point in tracking the sale if you don't get a report when you need it. WOLVOX ERP supermarket program offers reports to keep your records in check for the past while also shedding light on your forward looking plans.

- Able to get stock compliance report, non-operated stock reports and able to get status analysis reports of the stocks.
- Able to get stock profit / loss report
- Able to get periodic input/output report.
- Able to get report of best seller products.
- Able to take monitoring reports of project, sale and discount.
- Able to get report top selling district, province and country.
- Able to get reports of products not sold on customer basis.

And opportunity to get more different reports...



[www.akinsoft.com](http://www.akinsoft.com) - [www.wolvox.com](http://www.wolvox.com)

+90 444 40 80

 [akinsoftglobal](http://akinsoftglobal.com)

# SUPERMARKET MANAGEMENT SUPERMARKET MANAGEMENT



## Integration of Cash Register and Electronic Balance

**WOLVOX®**  
ERP E-Business *just in time...*

You can integrate online or offline with integrated cash registers through WOLVOX market automation program. In this way, you can provide full integration with WOLVOX ERP or WOLVOX quick sales programs by transferring sales from the cash register to the WOLVOX ERP program as invoices (Offline use) or printing sales from the quick sales program from the cash register instead of the normal printer (online use).

- Able to use your WOLVOX ERP program by executing your transactions from the cash register and transferring the sales made from the cash register to the WOLVOX ERP program as a invoice at the end of the day
- Ability to specify the VAT department by sending your recorded stocks to cash register on WOLVOX ERP Program.
- Besides of transfer product file, able to edit bill according to the certain total sale to by transferring client files from integrated devices.
- Ability to make sales at any price by specifying the sales prices of sent products.
- Able to take print of sales from cash register by WOLVOX Quick Sale Programme.
- Opportunity to use of multiple cash registers on local network.
- Able to sell by adding VAT to the product prices.
- Cash register sales used in branches can be taken to the center.
- (With the use File System feature, the product and client files are created and transferred to the file system by the center. You can also have branches send and receive the product and client files in the file system to the vaults.)
- By kartotex module you are able to print label even non-barcode products from printer or barcode printer.
- Able to transfer products to integrated electronic balances.
- Able to create folder for sending products to non-integrated electronic balances by writing script codes.
- Ability to make sales from any unit by making unit definition to your stock definitions.
- By using of advanced sales price system feature by transferring the advanced sales prices used in WOLVOX ERP program to compatible cash registers.
- To be able to request Z report, PLU report and EAN report



# Success Is Not A Coincidence If You Use

**WOLVOX®**  
ERP E-Business *just in time...*





+90 444 40 80  
www.akinsoft.com - www.wolvox.com

    akinsoftglobal

